



# Products Portfolio



ISO 9001 : 2015



# About AVSTech



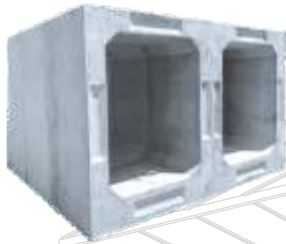
AVSTech Group commenced the business operations in 1995 and in just over two decades has established a successful presence across the portfolio of construction business verticals. AVSTech Group is the preferred Contractor for construction of Industrial Buildings, Commercial Buildings and Infrastructures works

AVSTech has established itself as a major manufacturer and supplier of building materials. The company is promoted by **Mr.Srinivasan, Managing Director**, a business development professional, ably assisted by a team of qualified and experienced professionals

# Precast Products

In the evolving landscape of urbanisation and infrastructure, Precast Concrete is playing an increasingly important role.

**Box Culverts**



**U-Drains**



**Retaining Walls**



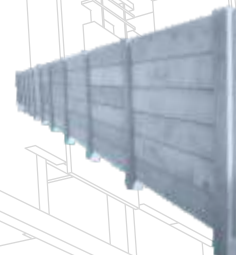
**Cover Slabs**



**Manholes**



**Wall Panels**



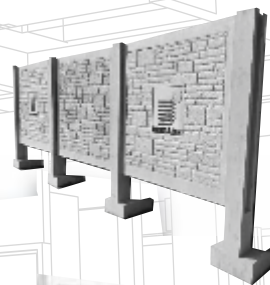
**Smart Structures**



**Crash Barriers**



**Single Panel Compound Walls**



**Hume Pipes**

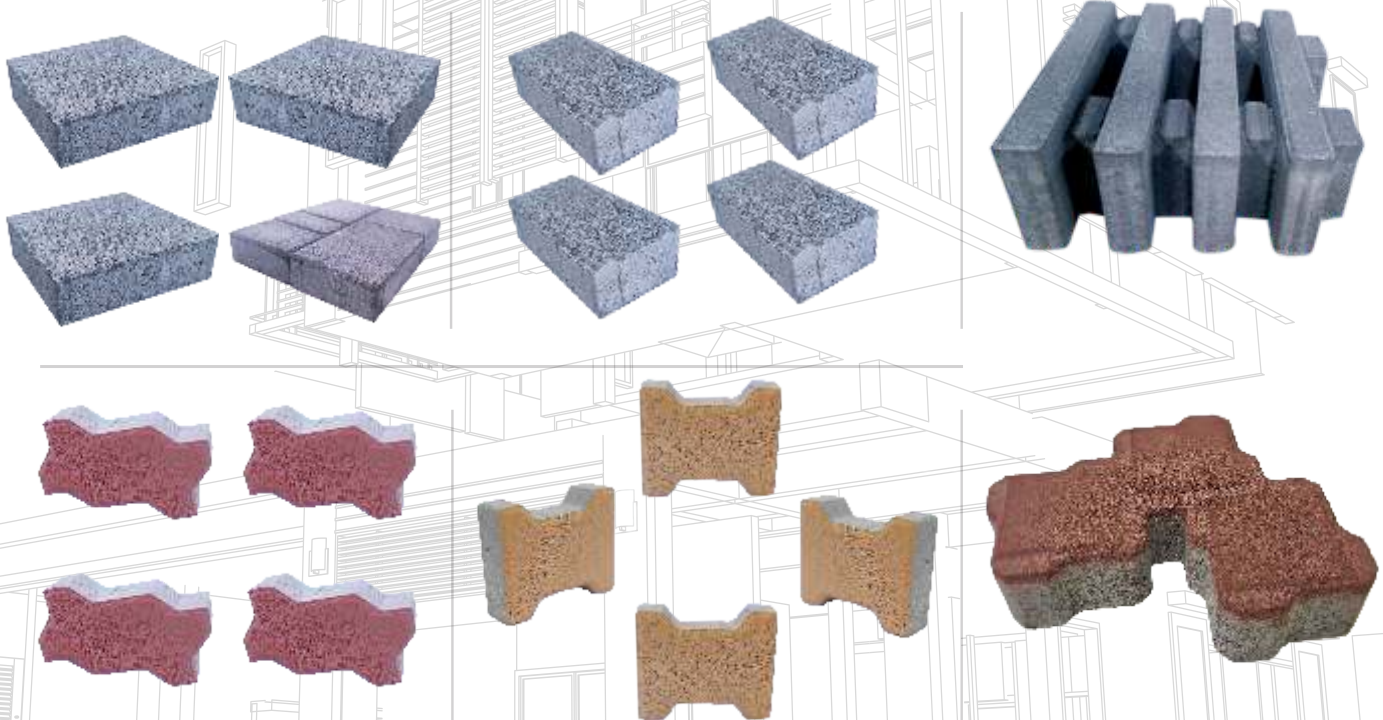


The market is now moving towards a precast system and so is, AVSTech moving ahead in the precast industry with a wide range of precast products.

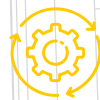
# Paver Blocks

Pavers & Kerb are prominently used in the landscaping sector functionally to demarcate various construction frameworks like roadways, pavements and parking spaces and any such areas.

So, you can choose your style and design because your choice is supported by quality manufacturer with environmental standards and ISO quality.



Highest strength & density and lowest water absorption compared to any other in the industry.



Manufactured in a completely automated latest machine using highly precise moulds.



Large capacity production for quick dispatches



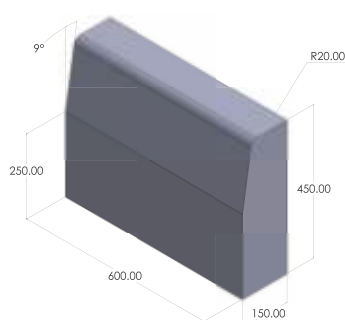
Available in grey, single and blended colors  
Available in various sizes and patterns suitable for light, medium and heavy traffic



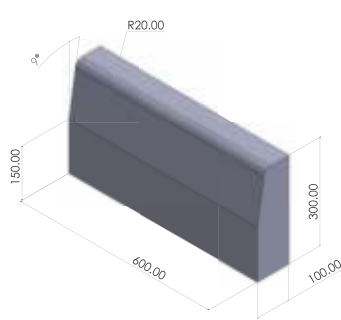
# Kerb Stones

Kerb stones are concrete blocks used for edging and outlining pathways.

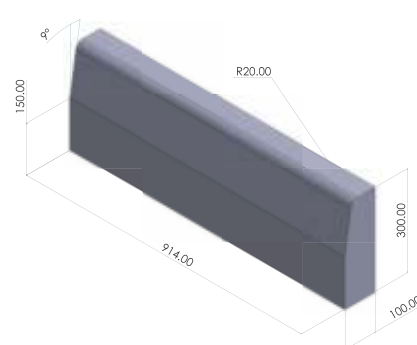
They are designed to define the boundaries of driveways, walkways and garden beds. Kerb stones are made in a variety of shapes and sizes. Kerb stones are a great way to bolster pavements.



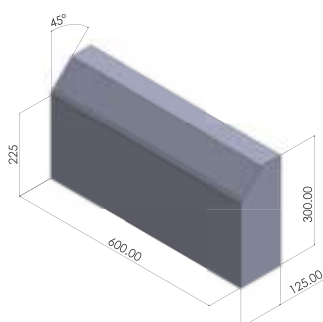
600x450 Half Batter



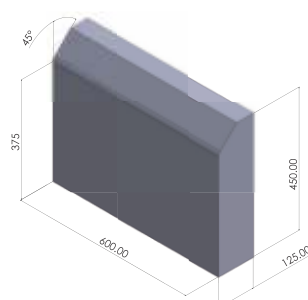
600x300 Half Batter



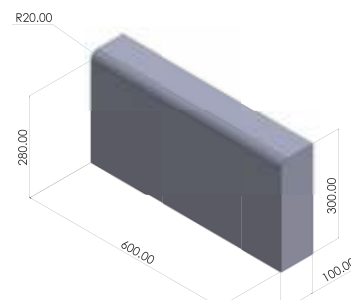
914x300 Half Batter



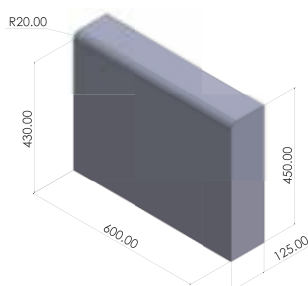
600x300 Full Batter



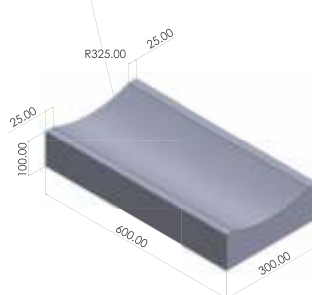
600x450 Full Batter



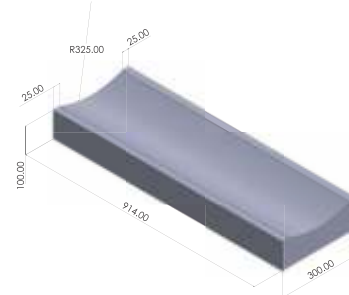
600x300 Bull Nose



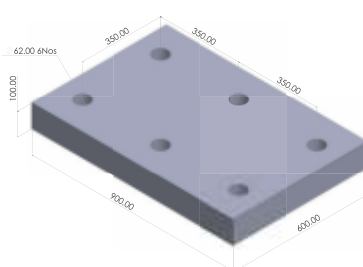
600x450 Bull Nose



600x300 Dish Water Channel



914x300 Dish Water Channel



900x600 Drain Cover

# Solid Concrete Blocks

Solid concrete blocks, which are highly heavy weight and formed by aggregate, are primarily utilized in construction projects. They are sturdy and give structures a lot of solidities. These solid blocks are ideal for large-scale projects such as force-bearing walls.

## Dimensions

400mm x 200mm x 200mm (8")
400mm x 200mm x 150mm (6")
400mm x 200mm x 100mm (4")

**Superior compression strength blocks for Houses, Commercial, Industrial Building walls.**



# AAC Blocks



AAC Blocks are a certified green building material. These precast concrete blocks are extremely lightweight and widely used for internal and external construction.

AVSTech AAC blocks are made as per BIS Code IS: 2815, part 3, guidelines in IS Code to ensure quality standards. We have a fully automatic plant with the state of the art technology with a capacity of 200 cubic meters per day.



## AAC Blocks 4 Variants

4inch , 6inch , 8inch, 9inch

### COMMON DIMENSIONS

LENGTH(mm)	HEIGHT(mm)	THICKNESS(mm)
600(2 ft)	200 (8")	100 (4")
600(2 ft)	200 (8")	150 (6")
600(2 ft)	200 (8")	200 (8")
600(2 ft)	200 (8")	230 (9")

## AAC BLOCK JOINING MORTAR

### ENGINEERED FOR AAC PERFORMANCE

The paste is tuned to match the size, porosity and surface texture of lightweight blocks - for bond that holds firm without sag or shift



# RCC Hume Pipes

The RCC HUME PIPES are manufactured using premium quality materials in various dimensions and weights in compliance with international quality standards.

These pipes can also be customized as per the requirements detailed by the clients. The clients can select from us an extensive range of pipes that are known for durability, strength and reliability. These pipes are manufactured using cement, sand, aggregate and steel.

Our pipes are widely used in Water Supply, Irrigation, Drainage, Power Generation and Rail transport by executing numerous turnkey pipeline projects for Water Supply, Sewerage and Hydroelectric Power Generation etc.



**COMMON DIMENSIONS (IS 458)**

TYPE	DIA	LENGTH
NP3 / NP4- FJ / S&S	300 mm	2500 mm
NP3 / NP4- FJ / S&S	450 mm	2500 mm
NP3 / NP4- FJ / S&S	600 mm	2500 mm
NP3 / NP4- FJ / S&S	900 mm	2500 mm
NP3 / NP4- FJ / S&S	1000 mm	2500 mm
NP3 / NP4- FJ / S&S	1200 mm	2500 mm



# Ready Mixed Concrete



AVSTech ready mixed concrete is produced in its fully automated and computerized BVQI certified batching plants. AVSTech concrete's experienced logistics team works closely with you to ensure that the concrete of requisite quality is delivered on time and in the appropriate quantities.

AVSTech has the experience and the ability to design, produce and deliver a wide range of ready mixed concrete variants to meet specific requirements.

**Fibre Reinforced Concrete | Self Compact Concrete | High Performance Concrete (Micro Silica) | Coloured Concrete | Temperature Controlled Concrete | Light weight Concrete | Screed Concrete**



**RMC Plant**



**Boom Pump**

# Construction - Roads & Industrial

Dynamic Versatile and Fast growing. That's AVSTech Building Solutions for you. AVS-Tech is a convergence of global entrepreneurial vision, time-honoured values and the best business acumen. We provide our clients' end to end business solutions with the best of the quality materials at affordable prices. We strive to deliver complete, successful, on-time and on-budget projects.

- **Site Grading Works**
- **Internal / External Concrete / Bitumen Roads with Allied Works**
- **Construction of Runways and Test Tracks**
- **Industrial, Hospital and Institutional Buildings (Both Structural and RCC)**
- **Warehouse Construction (Both Structural and RCC)**



# Our Clientele



*“Dynamic, Versatile and Fast Growing”*



**Corporate Office:**

**AVS House No. 298, Sipcot Housing Colony,  
Sipcot-1, Mookandapalli, Hosur - 635109**



**Regional Office:**

**AVS House, No. 2575, 13th cross, 24th Main HSR  
Layout, Sector - 1, Bangalore 560102**

---

**For more information:**



**Phone Number**

**080-69419999**



**Email**

**enquiry@avstechipl.in**



**Website**

**avstechipl.in**



Follow Us on

